

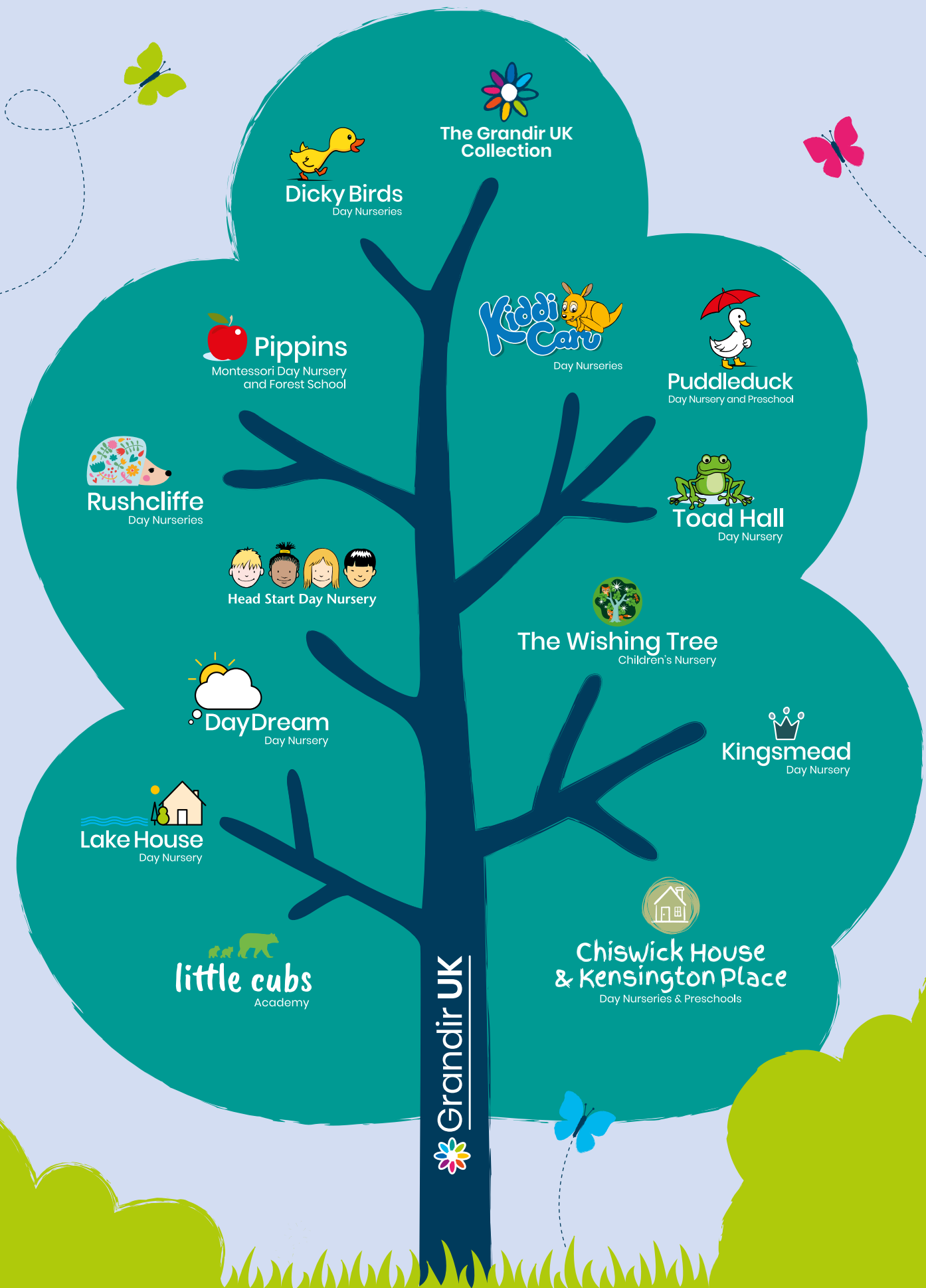
Welcome to our nursery

Our mission is simple, to provide exceptional education and care.

We are childcare experts that genuinely care, fostering a nurturing environment for our children and families to grow.



Our family of brands



Who we are

We are proud to be part of the Grandir UK family of nurseries. With a focus on being helpful and inspiring, we strive to lead as experts in care and Early Years education. Our dynamic, solutions-focused approach ensures we adapt and innovate to meet the needs of every child and parent we support.

We believe in growing together – our children, our people, and our community. We are committed to delivering outstanding childcare solutions for babies, toddlers, and preschoolers, all within our friendly and thoughtfully designed setting.

From the nutritious meals we prepare to the dedicated staff we employ, everything we do is focused on giving your child the best possible start in life.

We understand the importance of a strong partnership with parents. Communication is at the heart of our ethos, and we are committed to keeping you informed and engaged throughout your child's journey with us.

Our Grandir UK values:



Our education programmes

We provide tailored educational experiences that align with the Early Years Foundation Stages (EYFS) framework, ensuring your child is ready for both school and life.



Designed for children under two, our Pathway to the Foundations focuses on key areas of early development, using fun, interactive activities to support the primary areas of learning outlined in the EYFS principles.



We use both the EYFS framework and our own proprietary educational framework to structure the delivery of excellent early years learning. The EYFS prepares our children for school and our own Foundations for the Future programme prepares children for life! We recognise the important role our practitioners have in developing the next generation of happy and healthy successful children.

Our unique educational programme structure

We've developed exciting initiatives to make learning engaging, accessible and fun:



Health & Self

This programme is designed to support children's well-being and mental health. It focuses on good mental health and well-being, empathy and tolerance, and self-regulation and resilience.

We engage children aged 2-5 years old in a range of activities such as meditation, connecting with their mind, body and soul to help them self-regulate and to understand and manage their emotions.



Sow & Grow

Not only do we value food and nutrition, we teach the importance of environmental awareness and appreciation, growing and planting, and connection to the natural world.

Children aged 2-5 years old join in from the planting in our garden, to nurturing, monitoring and harvesting! We then include them in food preparation in our Make & Bake programme.



Innovate & Investigate

Focusing on STEM (Science, Technology, Engineering and Mathematics) activities we encourage children's intrinsic motivation to explore, question, experiment and discover in a safe and nurturing environment. It enhances and expands on everyday critical thinking and language.



Make & Bake

How wonderful it is when you can eat the food you helped grow! Make & Bake teaches healthy eating, science and technology, and independence.

Our Early Years Nutritionist helped create this programme to ensure it is inclusive and comprehensive. This includes catering to allergies and various nutritional needs.

Children join in cooking, chopping, mixing, making and baking the food they get to enjoy once ready!



Move & Groove

The purpose of this programme is to promote physical activity and well-being, agility and spatial awareness, balance and coordination, cardiovascular health and core stability.

We engage children in a range of activities that develop the body and encourages healthy choices to support a lifetime of strong physical and mental well-being.

[Click here to find out more about these programmes](#)



Did you know:

The Government recommends that children under 5 move for at least 180 minutes a day!

Our approach to SENCo



At Grandir UK, inclusivity is at the heart of everything we do. Each of our nurseries has a dedicated, qualified SENCo practitioner to support children's individual needs, ensuring they receive high-quality care and education tailored to them.

They also work with local authorities to ensure children and families can access additional funding and facilities to best meet children's individual needs.

Our priority is ensuring that every child is given the time, care and resources they need to thrive, with a focus on creating a safe and encouraging space where they can grow at their own pace and reach their full potential.

Beyond this, our regional SENCo specialists attend ongoing training and guidance to keep our nurseries up to date with best practices. This ensures our teams are always equipped to make the right adjustments and provide the best possible support for SEND children.

Our wider team of Early Years Specialists also plays a key role in shaping policies, implementing best practices, and maintaining a strong SEND focus across our family of nurseries.

Our nutrition and food ethos



We've developed exciting new initiatives to make mealtimes and learning about nutrition and food an engaging, accessible, and fun experience for children, fostering curiosity and promoting healthy habits from an early age.

- Our menus follow strict guidelines as set out by the UK Government, the NHS, and The Caroline Walker Trust. Allergies and medical requirements are always catered for.
- We utilise a traffic light system to keep mealtimes safe and fun for children with allergies.
- We implement a four-week rolling menu for each season to keep mealtimes interesting.
- [Click here to see our latest example menus](#)
- Meals include varied textures and flavours to encourage children to try new foods.
- Portions are determined by nutritional needs and recommended quantities per age group.
- Eating together is a great learning activity for social interaction, turn-taking and more.
- Our teams are trained in paediatric first aid to support safe and effective mealtimes.



Your Early Years journey

Whether you're enrolling your baby for the first time or preparing your preschooler for formal education, each stage of early childhood comes with its own questions and milestones. Our Early Years journey below is designed to guide you through what to expect at every phase during their care in our nursery, ensuring your child thrives at every stage.

As part of our warm welcome, we offer settling-in sessions to help your child transition smoothly into nursery life. These sessions are available at all stages of the Early Years journey and are guided by your child's dedicated key person, ensuring they feel secure, comfortable, and supported from the very start.

Babies – First steps in care

Leaving your baby in someone else's care can feel daunting, but our warm and experienced teams are here to support you every step of the way.

The baby years are filled with exciting firsts—steps, sounds, words, new foods, and more! Our nurturing environments are designed to be safe for wobbly movements and supportive of each child's unique developmental pace. We focus on sensory play, early communication, and building strong, secure attachments.

We work closely with parents to ensure routines and preferences are respected, from feeding and nap times to comforting techniques. Our team follows strict health and safety guidelines for bottle feeding, whether your baby has breastmilk or formula—we're happy to accommodate both.

When it's time for weaning, we follow your lead. Whether you prefer baby-led weaning, purees, or a combination, we support your approach and introduce new foods in line with your guidance.

Toddlers – Exploring and growing

As curiosity takes over, our toddler spaces encourage discovery, independence, and social interaction. Through engaging activities, imaginative play, and early language development, we help toddlers build confidence while supporting key developmental milestones.

Around the age of two, toddlers begin taking part in our innovative educational programmes, designed to nurture their natural curiosity and expand their learning experiences.

We also support families through important milestones, such as potty training. Every child is different, and we work in partnership with parents to continue their potty training journey at nursery in a way that feels consistent and reassuring.



Preschoolers – Getting ready for big school

With school on the horizon, our preschool programme focuses on preparing children for their next big step. Through structured play, early literacy and numeracy activities, and problem-solving challenges, we foster a love for learning and strengthen key skills. While never forgetting to learn through fun, play and physical activity!

Social development, independence, and resilience are central to our approach, ensuring children feel confident and excited as they transition to primary school. To celebrate this important milestone, we host special graduation ceremonies, bringing families together to mark the end of their child's Early Years journey.



Frequently Asked Questions

What is a 'key person'?

Your child will be assigned a key person who gets to know them really well and builds a strong, trusting relationship with you and your family. They'll help your little one settle in, provide daily updates, track their development, and support you every step of the way.

When do settling-in sessions start?

Your nursery manager will be in touch ahead of your child's start date to arrange settling-in sessions. These are designed to help both you and your child adjust comfortably to nursery life.

What should my child bring to nursery?

We provide meals, drinks, sun cream, nappies, wipes, and nappy cream. Here's what we kindly ask you to pack in a named, non-drawstring nursery bag (no plastic bags, please):

Babies (0–2):

- Formula or breast milk
- Bottles
- Comforters and sleeping bags
- Outdoor shoes
- Spare clothes

Toddlers (2–3):

- Reusable water bottle
- Wellies and spare shoes
- Comforters and sleeping blankets (if needed)
- Spare clothes (especially helpful during potty training)

Preschoolers (3–5):

- Reusable water bottle
- Wellies and indoor shoes
- Spare clothes

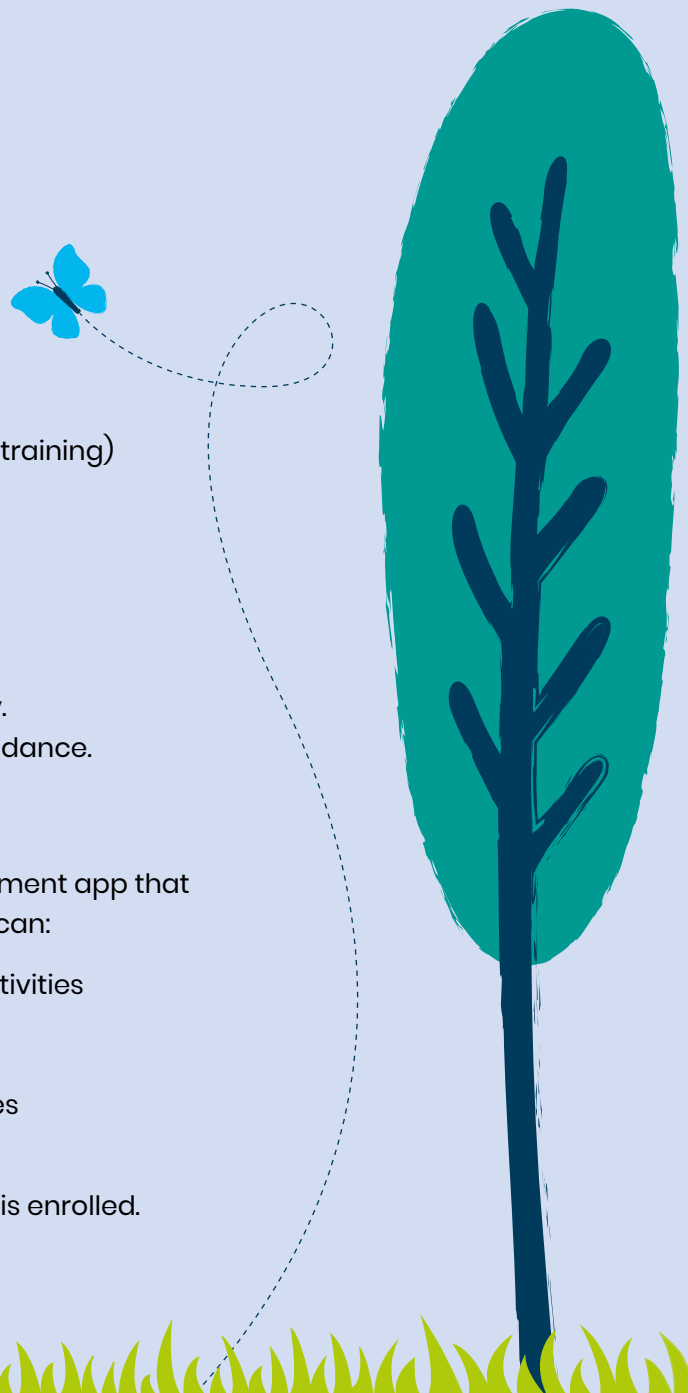
Please note: this list may vary slightly by nursery.
Contact your local team for nursery-specific guidance.

What is the Grandir UK App?

The Grandir UK App is a secure nursery management app that keeps you connected with your child's day. You can:

- Get real-time updates on meals, naps and activities
- View photos and videos
- Message the nursery team directly
- Track your child's development and milestones
- Check invoices, payments and bookings

You'll receive access to the app once your child is enrolled.



Frequently Asked Questions

Do you accept government funding?

Yes, we do! We've created a handy online guide to help you:

- Set up your government account
- Get your unique code
- Understand which funding options you're eligible for

[Click here to find out more about funding](#)

Can my child attend part-time?

Absolutely. From September 2025, your funded hours (11 or 22 per week) will be applied to the first hours of your child's attendance each week.

For example, if you receive 11 hours of funding, it may cover your child's first full day and the first hour of day two.

To support your child's development and provide consistency, we require a minimum attendance of two full days per week.

What are Everyday Essentials?

In addition to core childcare, we apply a small daily charge for:

- Nutritious meals and snacks, freshly made by our on-site chefs
- Consumables like wipes, nappies and hygiene items
- Enrichment activities such as Forest School, Boogie Mites, or Sing & Sign

These extras **are not** covered by government funding but are essential to the high-quality experiences we provide every day.

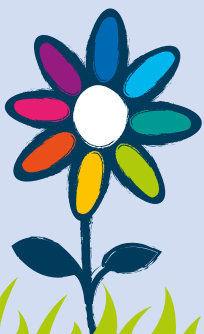
Can I book extra sessions?

Yes, many of our nurseries offer extra sessions when you need additional care and your child is already enrolled. Simply speak to the team to see what's available.

Looking to make a permanent change to your booking pattern? That's no problem – just give us eight weeks' notice, and we'll do our best to accommodate you, subject to availability.

Do you charge normal fees if my child is ill or on holiday?

Yes, normal fees still apply. We hold your child's place for when they return, ensuring their spot remains secure.



Frequently Asked Questions

Can my child come in if they're unwell?

It depends on your child's symptoms and how they may affect others. Our sickness policy explains:

- When it's okay to attend
- When you may be asked to collect your child
- When children should stay home
- How long they need to stay away before returning

This is all in place to protect the health of all children and staff.

[Click here to read our full medicine & illness policy](#)

What safeguarding measures do you have in place?

We take the safety and well-being of children and staff very seriously. Our nurseries operate in line with a robust safeguarding policy that every team member follows.

[Click here to view our Safeguarding and other policies](#)

How does nursery drop-off and collection work?

Drop-off and collection times are based on your agreed booking pattern. Please note that we cannot accept children before our official opening times.

You can drop off and pick up anytime within the nursery's opening hours. For example, if you've booked a full day, you are still welcome to drop your child off at 11am if that suits your schedule. To ensure every child's safety:

- We follow strict collection procedures
- If someone else is collecting your child, we'll need their details and prior agreement
- If you're running late, please call us as soon as possible

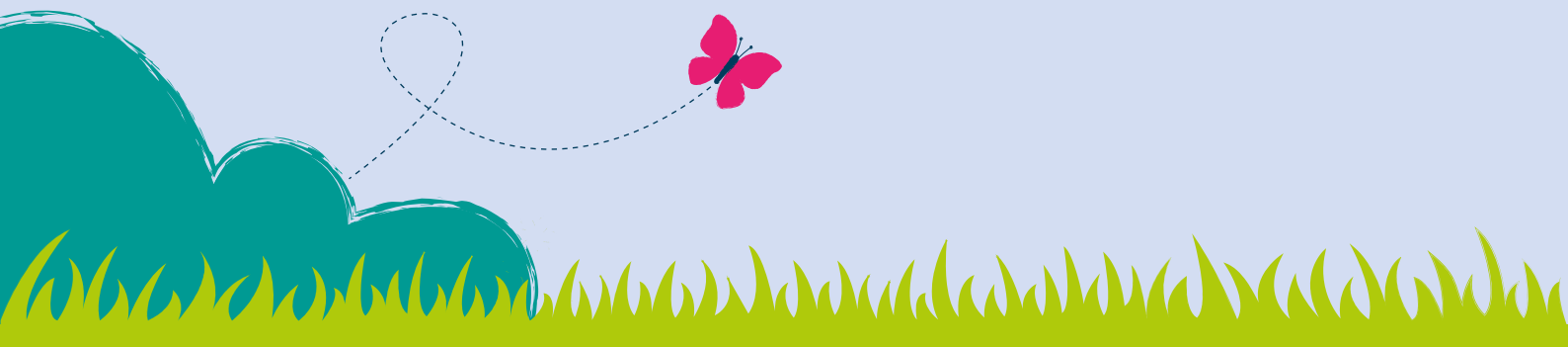
A late collection fee may apply if delays become regular.

Who is Grandir UK?

Grandir UK is home to a family of trusted nursery brands across England. We've been providing outstanding childcare for over 25 years, supporting babies, toddlers and preschoolers to grow, learn and thrive.

Our family of nurseries includes:

Kiddi Caru Day Nurseries, Dicky Birds Day Nurseries, Rushcliffe Day Nurseries, Toad Hall Day Nursery, Lake House Day Nursery, DayDream Day Nursery, The Wishing Tree Children's Nursery, Pippins Montessori Day Nursery and Forest School, Kingsmead Day Nursery, Little Cubs Academy, Head Start Day Nursery, Puddleduck Day Nursery and Preschool, Chiswick House & Kensington Place Nurseries and The Grandir UK Collection.

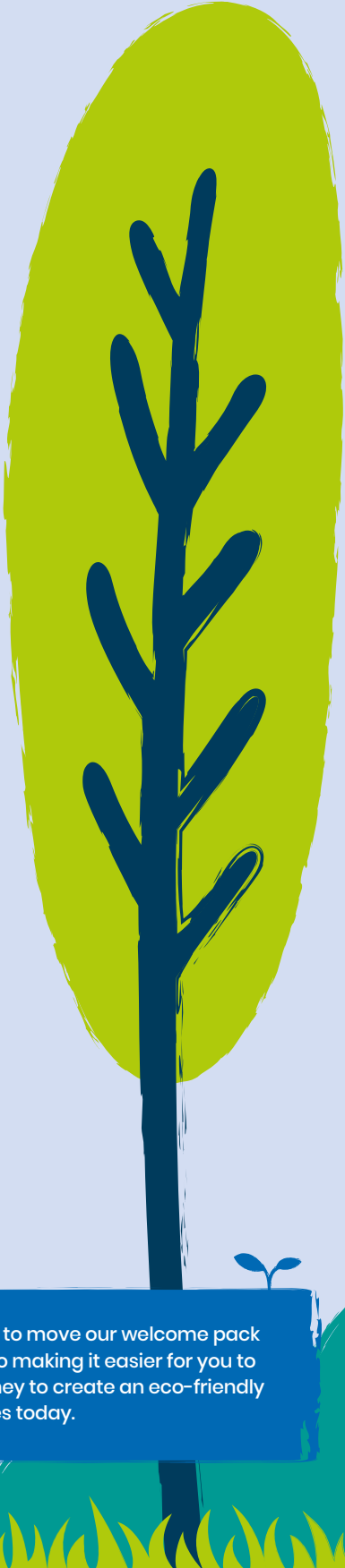
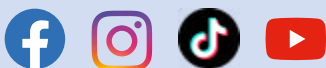


We look forward to welcoming you and your child to our nursery!

Whether you're looking for outstanding care,
inspiring education or a strong sense of community,
we're here to meet your needs and support your
family every step of the way.

Call us: **0800 028 4500** Mon - Fri 8.30am - 5.30pm

Visit our website: **www.grandiruk.com**



As part of our ongoing commitment to sustainability, we've made the conscious decision to move our welcome pack online. By reducing printed materials, we're not only lowering our carbon footprint but also making it easier for you to access the information you need anytime, anywhere. It's one small step in our wider journey to create an eco-friendly future for the children in our care; protecting their tomorrow starts with thoughtful choices today.